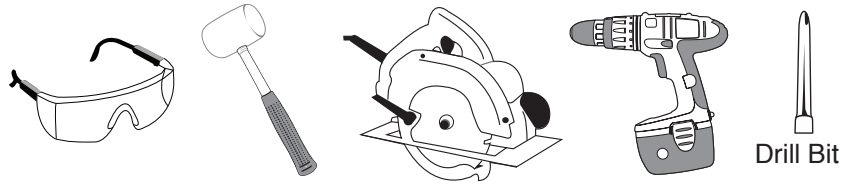




BRITE
COMPOSITE DECKING

TOOLS: Protective eye wear, a rubber mallet, saw and a power drill with the proper size bit (Bit supplied in 250 package of deck clips and screws).



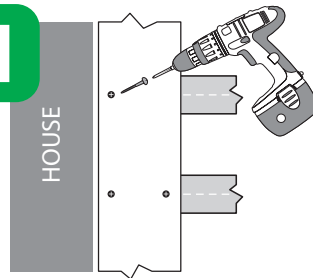
Instructions for Brite Traditions Decking Boards

BEFORE YOU BEGIN

Please read the complete instructions before starting

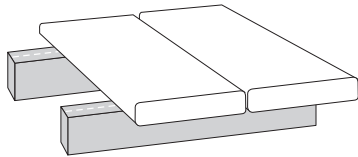
When constructing a deck that will have two or more boards running end to end, please take the time to read step 5 carefully. Step 5 will help manage the possible gapping that can occur. Step 6 is an option. The plastic component in composite decking can contract and expand and is a natural occurrence associated with most other building materials as well. **NOTE:** Always check your local building code for joist spacing and joist size.

STEP 1



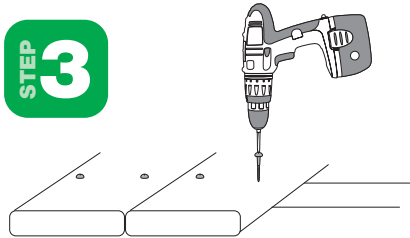
Position the first board $\frac{1}{4}$ " away from the edge of the house / structure and fasten the $2\frac{1}{2}$ " deck board with deck screws. Screws should be positioned $1\frac{1}{2}$ " from the edge closest to the house/structure. Repeat this step for each joist. **NOTE:** Pre-drilling and counter sinking the screw will result in a better appearance.

STEP 2



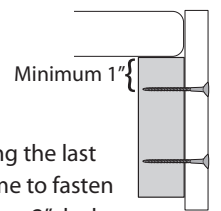
When laying down the boards, position them so they are $\frac{1}{8}$ " apart. A handy hint is to have several pieces $\frac{1}{8}$ " thick as spacers.

STEP 3



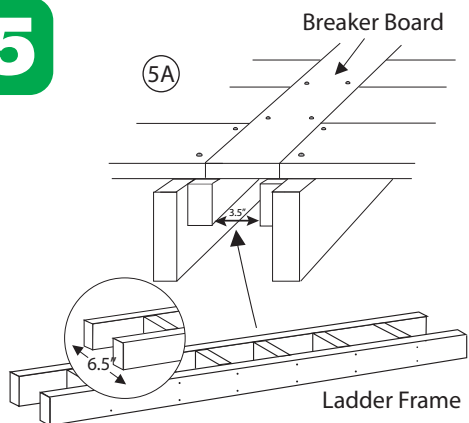
For each board you should use two deck screws into each joint. Try to have the screw heads at least flush to the surface of the deck board.

STEP 4



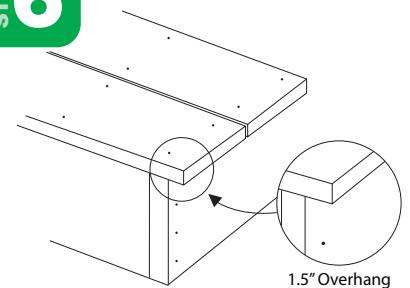
After installing the last board it is time to fasten the fascia using 2" deck screws. Fasten the fascia to the framing using two 2" deck screws every 2 feet.

STEP 5



When two boards are butted together end to end, one of the two methods above must be used. **Option 5A:** Construct a 2" x 4" ladder (see figure 5A) that has 2" x 4" rungs every 12". Attach the ladder to the joist. The breaker board will now rest on the frame. Then fasten the breaker board using 2 $\frac{1}{2}$ " deck screws. The deck boards will butt tightly against the breaker board, while resting on the joist. **Option 5B:** Fasten the 2x4's on each side of the joist, butt the boards to meet in the middle of the joist, then fasten with two screws at each joint.

STEP 6



With Brite Composite Decking, there may be expansion and contraction of $\frac{1}{16}$ " for every four feet, which can result in minor gaps. If this is a concern we recommend the construction of the boards to have a 1 $\frac{1}{2}$ " overhang. The purpose of this is to allow you to loosen the screws and reposition the board to eliminate any gaps.

2 Manchester Ct. Bolton, ON Canada L7E 2J3 Toll Free: 800.265.6021 Fax: 905.951.4518

For warranty information and to see a video of the installation please visit our web site, at www.britemfg.com